

ONE SYSTEM **ENDLESS SOLUTIONS**

ASSET MANAGEMENT FOR GOVERNMENT

DEVELOPED FOR:

- | | |
|----------------|-------------|
| Administrators | Operators |
| Managers | Foremen |
| Ratepayers | Directors |
| Councillors | Supervisors |

PUBLIC WORKS **SYSTEM SOLUTIONS**

MOBILE SYSTEMS



ROAD GRADER MONITORING SYSTEM

Up-to-date road repair and snow clearing data at your fingertips

- Automatically records all roadwork completed and operator activities. No manual entries
- Quickly and accurately answer work-performed rate-payer inquiries
- View work history details of entire fleet with the click of a button



HIGHWAY MOWER MONITORING SYSTEM

Step up your safety with real-time hazard detection & in-cab alarm

- Save thousands of dollars in avoided repairs to mowers and culverts
- Provide detailed history of mowing program to assist in planning route schedules
- Build your operator's confidence regardless of their experience



MATERIAL HAULAGE & BUDGET FORECASTING SYSTEM

Take a granular approach to your gravel application program

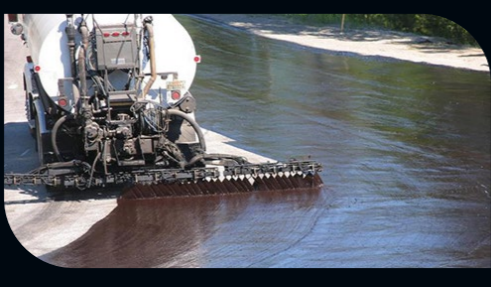
- Quickly discern where your gravel budget is being used with maps and reports
- Budget comparison allows detailed breakdown of material and transport costs
- Show your rate payers exactly where their Taxes are being allocated



SPRAYER MONITORING SYSTEM

Collect data to determine effectiveness of noxious weed program

- Eliminate manual reporting of work completed
- Protect against litigation with factual information
- Historical and real-time type and quantity of chemicals applied, weather information



UTILITY MONITORING SYSTEM

Track both costs & productivity for all pieces of equipment

- Get a detailed breakdown of project costs while in operation
- Monitor active systems in time and distance (PTO, switches, etc.)
- Know where product has been applied (oil, water, chemical, etc.)



SANDER MONITORING SYSTEM

Oversee sanding operations in real-time from anywhere

- Determine if sand drops are following operational policies
- Identify & target problem areas quickly and effectively
- Evaluate operational effectiveness for future years



X-IT GIS DATA COLLECTION SYSTEM

Build your digital database of all key assets

- Protect the fleet. Mark hazardous locations to send to other units for hazard detection
- Provide accurate gravel maps for operators and contractors
- Build reports and maps of all marked locations



CUSTOM MAP OVERLAYS

Get the information you need most out of your data

- Customized map layers allow you to use the map you are familiar with
- Eliminate time guessing where work has been completed
- Integrate with X-it GIS data to build a clear picture of your municipality

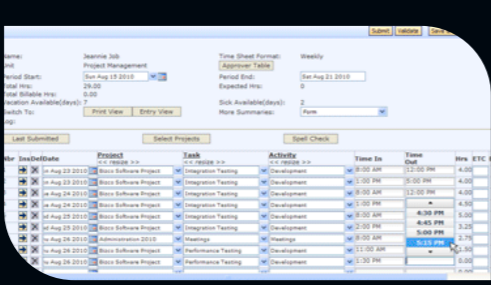


FLEET MONITORING SYSTEM

Get a bird's eye view of your fleet activities

- Reduce fuel costs from unnecessary vehicle idling
- Increase operational efficiencies with review of fleet historical activity
- Reduce maintenance costs with timely maintenance notifications

STATIONARY SYSTEMS



ON-SITE ATTENDANCE SYSTEM (TITO)

Real-time and Historical Employee attendance Monitoring

- Keep track of your employees with easy key-fob clock in/out system
- Minimize overtime costs with real-time notifications
- Easy integration with payroll systems with report export options



BULK WATER MONITOR & CONTROL SYSTEM

Cost-effective access, billing & detailed usage reports

- Eliminate time and labor spent collecting coins or fixing key mechanisms
- Define water rates based on types of users (Residential, Commercial, Seasonal, etc.)
- Eliminate access for un-authorized users



GATE/DOOR ACCESS MONITOR & CONTROL SYSTEM

Control and bill for access to public services

- Easy billing with detailed access reports
- Provide Flexibility with pre-paid or post-pay options
- Make better policy decisions with detailed site usage data

Proudly providing new tech solutions to all levels of government across Canada

"The ConX Wireless system provides us with tracking capabilities which will allow us to better ascertain our costs on various roads and projects. It has also been extremely beneficial in tracking municipal equipment for private projects for billing purposes."

Darren Elder – Chief Administrative Officer
– RM of Wilton #472

"One month after we had installed the new system, our water revenue quadrupled in comparison to the entire previous year. We were a little shocked by this, and the data we are now getting gives us great insights into our water distribution. We can see who our heavy users are, who our non-rate paying users are and set water rates for each of them, accordingly."

Trevor Drinkwater – Mayor
– Municipality of Glenboro-South Cypress, MB

"We signed up with the ConX Wireless system early this year and this is the 1st year since I've been here that we do not have any damage to our tractor mower tires or ditch hitches. Our operators no longer have to guess where a culvert or other hazard is, the ConX hazard detection system gives them lots of time to avoid incidents."

Lawrence Priebe – Public Works Foreman
– RM of Lawtonia #259

"We have a lot of manholes that protrude above the asphalt due to the deterioration and settling of the streets, we marked these hazardous manholes with the X-it marking system and ConX Wireless's unique hazard detection software. The operators are now alerted as they approach these hazardous manholes saving the town thousands of dollars in possible repair and down time. The real benefit to having this system is to allow the operator to concentrate on the task at hand reducing stress and fatigue. Furthermore, we now have a GIS database of our infrastructure."

Eric Bilanski – Public Works Manager
– Town of Battleford, SK

"We purchased the ConX wireless system as a tool to help us demonstrate and record the work being completed in our road maintenance program. Our Operators were a bit hesitant and so with full transparency, we gave them access to the system and they love it. They have hard data to back up the work that they do every day in case anyone wants to dispute their work."

I can step back and have peace of mind knowing that they are doing what I ask, day in and out. This tool allows us to plan our daily operations in the most efficient way possible, eliminating excess work as well."

Kevin Medeiros – Operations Manager
– RM of Ste. Anne, MB

Rate-payers served
190,000

Bulk Water Controlled
1,500,000,000 Litres

Maintained Roads Monitored
9,000,000 Km

Fleet Vehicle Distance Tracked
525,000,000 Km

Productivity Events Reported
34,000,000 Events

Excess Idle-time Monitored
190,000,000 Minutes